

# OLYMPUS®

Your Vision, Our Future

RHINO-LARYNGO VIDEOSCOPE

## ENF-V2

Slimmer Design for Gentler Insertion – Expanding the Possibilities with an Ultra-Slim Videoscope



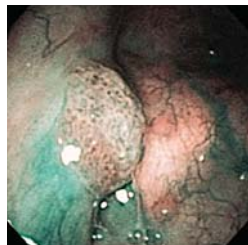
A bold, bright picture. A slim, sleek design.  
Observation and insertion performance have evolved.

## Imaging



### High quality images

The ENF-V2 delivers some of the brightest, clearest images in a videoscope, making observation less strenuous, facilitating a detailed image for diagnosis.



### NBI

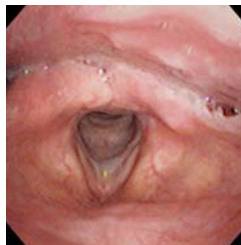
Observation with Narrow Band Imaging (NBI) is available when used with the EVIS EXERA II Universal Platform or VISERA Pro video system.

## Ultra-Slim



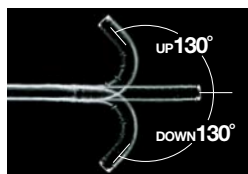
### 3.2 mm diameter

Even thinner than conventional routine fiberscopes, this scope's slim design helps to facilitate insertion while enabling clear observation.



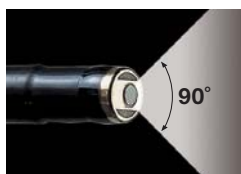
Allows smooth insertion into narrow nasal passages and throat.

## Performance



### Flexibility

130° UP/DOWN flexible angulation facilitates less invasive insertion and effective orientation capability.



### A Wide FOV

A 90° wide field of view allows a large area to be observed without unnecessary angulation.

### OLYMPUS ENF TYPE V2 Specifications



<b>Optical system</b>	
Field of View	90°
Directions of view	Forward viewing
Depth of field	5 - 50 mm
<b>Insertion tube</b>	
Distal end outer diameter	3.2 mm
Flexible tube outer diameter	3.4 mm
Working length	300 mm
<b>Bending section</b>	
Angulation Range	Up 130°, Down 130°
<b>Total length</b>	528 mm
<b>NBI</b>	Available

### Compatible Video Systems



EVIS EXERA II



VISERA / VISERA Pro



OTV-SI

Specifications, design and accessories are subject to change without any notice or obligation on the part of the manufacturer.



OLYMPUS MEDICAL SYSTEMS CORP.  
Shinjuku Monolith, 2-3-1 Nishi-Shinjuku, Shinjuku-ku, Tokyo 163-0914, Japan

For a complete listing of sales and distribution locations visit:  
[www.olympus.com](http://www.olympus.com)